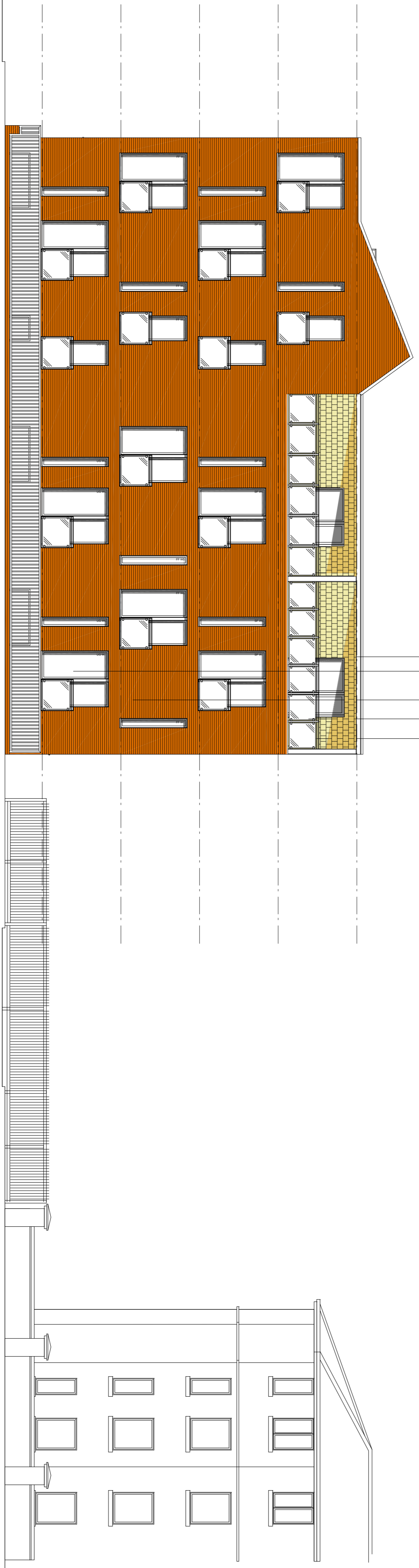


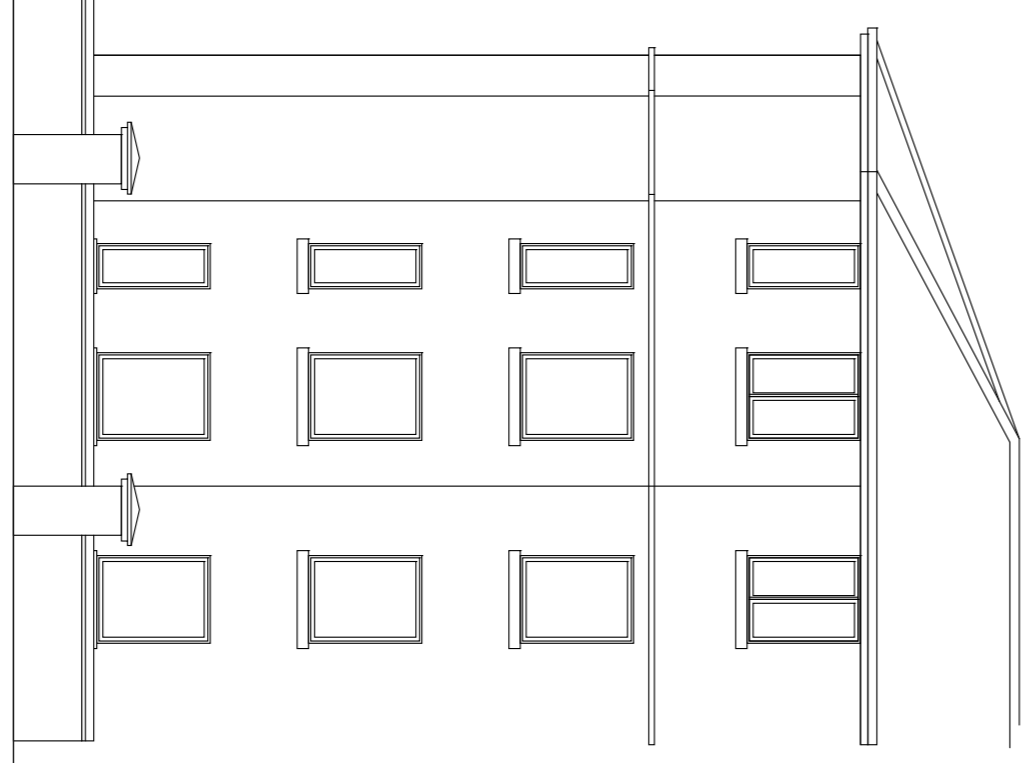


HEALD GROVE ELEVATION

- High-speed roller shutter
- Painted steel railing and gate - colour to approval
- Fibre cement tiles - colour to approval
- Glass balustrade
- Facing brickwork - colour to approval
- Aluminium framed double glazing - grey colour to approval
- Metal balustrading - finish to approval
- Galv' steel brise soleil



GREAT WESTERN STREET ELEVATION



AMENDMENTS	I	DATE
JOB		
CLIENT		
<p>Proposed Development 333 Great Western St, Rusholme, Manchester.</p>		
<p>MCR Property Group</p>		
SUBJECT		
<p>Proposed Heald Grove & Great Western Street Elevations (Preliminary)</p>		
DRAWN	RJB/ak	DATE 28.09.2007
CHECKED		SCALE 1:100
APPROVED		
<p>HOWARD & SEDDON A.R.I.B.A. CHARTERED ARCHITECTS 64 WASHWAY ROAD, SALE, CHESHIRE M33 7RE. TEL No. 0161 - 973 8296 FAX No. 0161 - 962 3485 e-mail : admin@howardandseidon.co.uk</p>		
DWG No.	8922	AMENDMENT
		06